

GIN156M

6" Multicrystalline Silicon Solar Cell

Features

Performance and Quality

- All products passed in-line optical inspection.
- 100% inspected for shunt resistance and reverse current.
- Standard cells calibrated by Fraunhofer ISE.
- Regularly monitor product performance and soldering properties.

Environment Friendly

- All products conform to the regulation of RoHS.
- Recyclable card board and sponge used for inner package and also cartons.

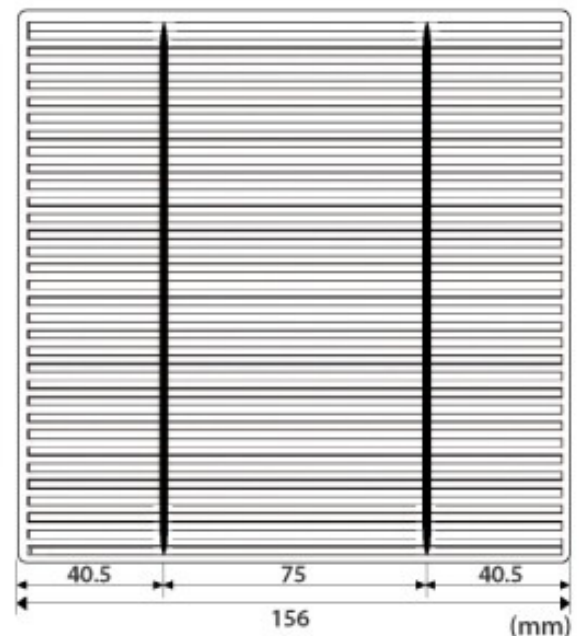
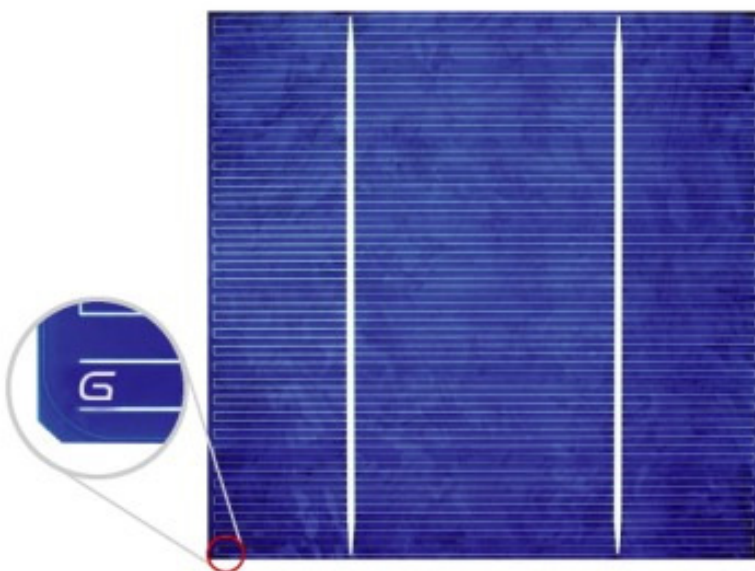
Highly Efficient Logistics

- 2D barcode on all package labels, ready for fast digital incoming control.

Physical Characteristics

Dimensions	156mm X 156mm \pm 0.5mm	Thickness(Si)	180 μ m \pm 20 μ m
Front	Acid textured surface with SiNx anti-reflecting coating Color : Blue & Light Blue 2 bus-bars in 2.0 mm \pm 0.1mm width Distance between bus-bars : 75 mm Negative pole (-)		200 ~ 220 μ m \pm 30 μ m
		Back	Aluminum back surface field 2 bus-bars in 4.0 mm \pm 0.1mm width Distance between bus-bars : 75 mm Positive pole (+)

Appearance and Drawing



GIN156M

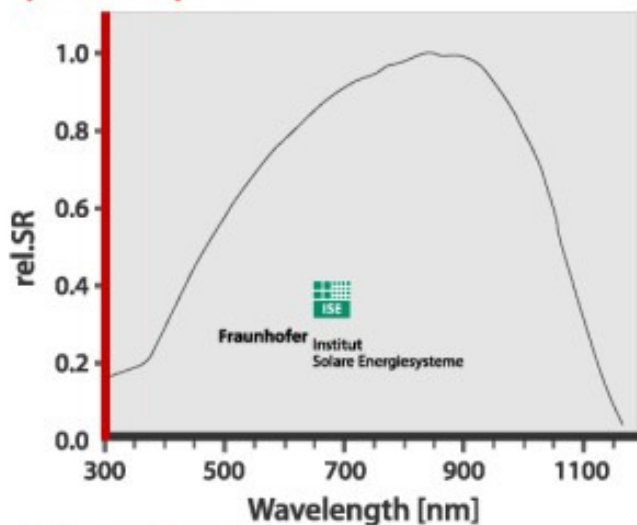
Electrical Characteristics under STC*

Code	16.60	16.40	16.20	16.00	15.80	15.60	15.40	15.20	15.00	14.80	14.60
Efficiency Range [%]	16.7-16.5	16.5-16.3	16.3-16.1	16.1-15.9	15.9-15.7	15.7-15.5	15.5-15.3	15.3-15.1	15.1-14.9	14.9-14.7	14.7-14.5
Average Power [W]	4.04	3.99	3.94	3.89	3.85	3.80	3.75	3.70	3.65	3.60	3.55
Power Range [W]	4.06-4.02	4.02-3.97	3.97-3.92	3.92-3.87	3.87-3.82	3.82-3.77	3.77-3.72	3.72-3.67	3.67-3.63	3.63-3.58	3.58-3.53
Short Circuit Current I_{sc} [A]	8.32	8.29	8.24	8.19	8.14	8.09	8.03	7.97	7.91	7.82	7.73
Open Circuit Voltage V_{oc} [mV]	627	625	622	620	617	614	611	609	607	606	606
Current at 0.5V [A]	7.98	7.92	7.84	7.76	7.67	7.57	7.48	7.38	7.27	7.16	7.07
Maximum Power Current I_{mp} [A]	7.80	7.76	7.71	7.66	7.60	7.55	7.50	7.44	7.38	7.29	7.2
Maximum Power Voltage V_{mp} [mV]	516	513	511	508	505	502	500	497	494	493	493
Fill Factor [%]	77.12	76.89	76.72	76.62	76.51	76.39	76.26	76.14	75.94	75.89	75.79
Temperature coefficients	$I_{sc} : 0.05\%/^{\circ}C$		$V_{oc} : -0.36\%/^{\circ}C$		$FF : -0.157\%/^{\circ}C$		Power : $-0.46\%/^{\circ}C$				

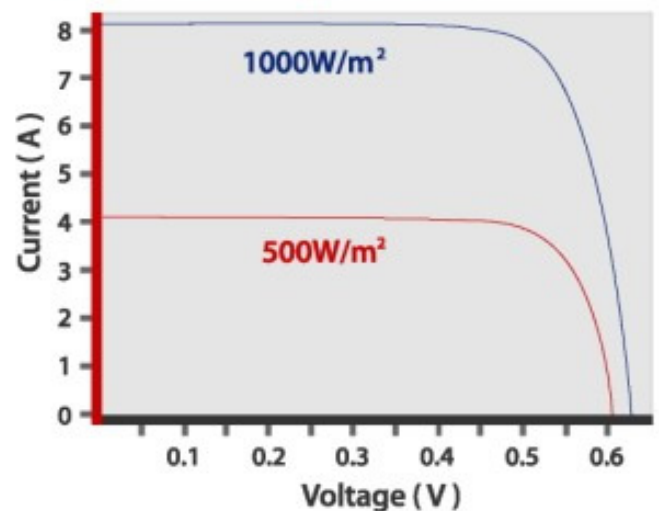
*STC (Standard Testing Conditions) : 1000W/m², AM1.5, 25°C.

The above data are average figures presently measured. Reference data are calibrated by Fraunhofer ISE Freiburg.

Spectral Response



I-V Curve of Efficiency 16.20% Cell



Irradiance Dependence

Irradiance [W/m ²]	1000	900	500	300	200
I_{sc}	100%	90.0%	49.9%	29.9%	20.0%
V_{oc}	100%	99.8%	97.1%	94.8%	93.0%

GINTECH ENERGY CORPORATION

Taipei Main Office

8F, No. 396, Sec. 1, Nei Hu Rd., Neihu Technology Park, Taipei City 114, Taiwan, R.O.C.

Tel : +886-2-2656-2000 Fax : +886-2-2656-0593 E-mail : sales@gintech.com.tw

www.gintechenergy.com

Specifications and data may change without prior notice due to product development.